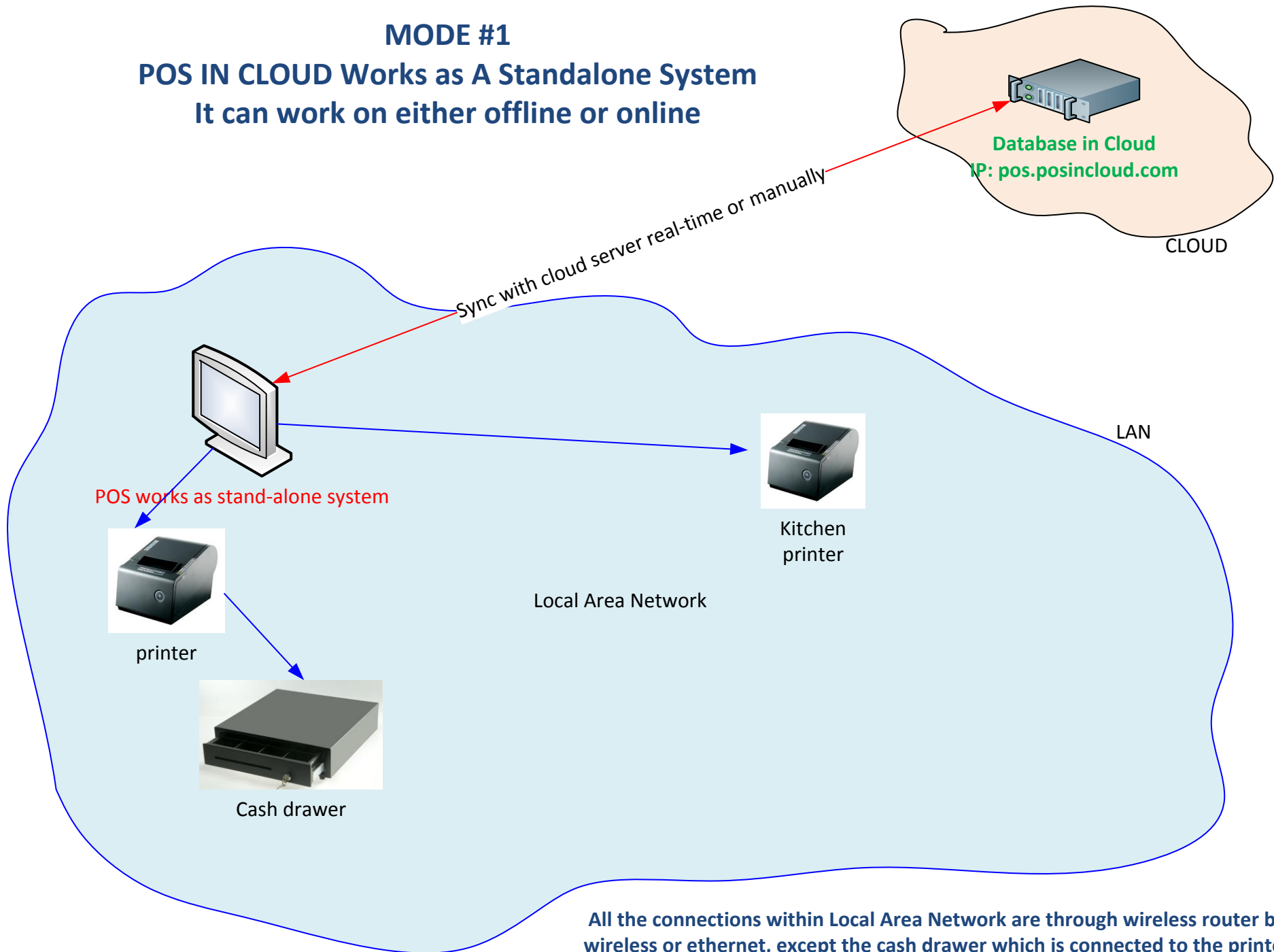
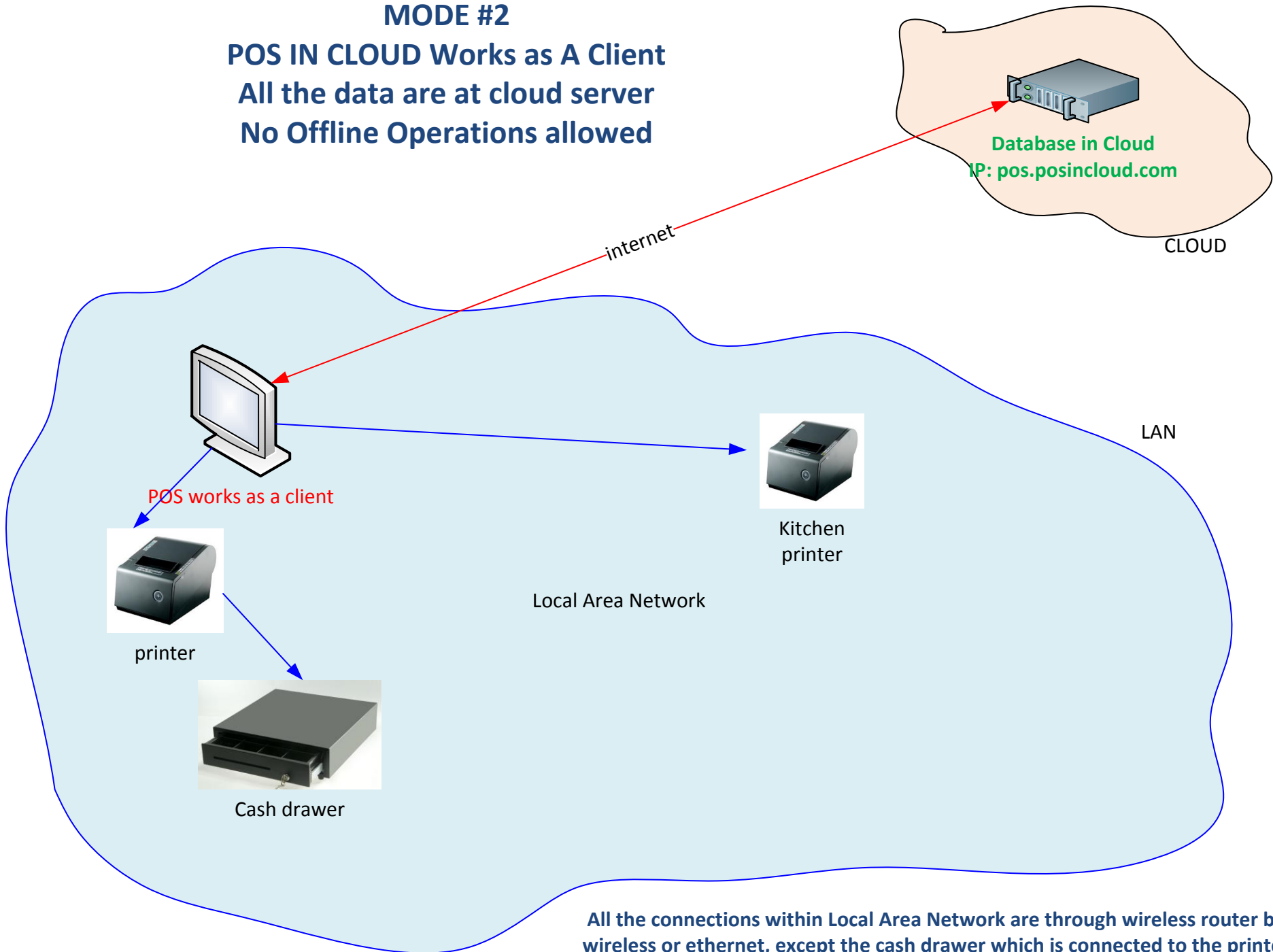


**MODE #1**  
**POS IN CLOUD Works as A Standalone System**  
It can work on either offline or online



All the connections within Local Area Network are through wireless router by wireless or ethernet, except the cash drawer which is connected to the printer  
Check the last diagram named "LAN setup example" for reference

**MODE #2**  
**POS IN CLOUD Works as A Client**  
**All the data are at cloud server**  
**No Offline Operations allowed**

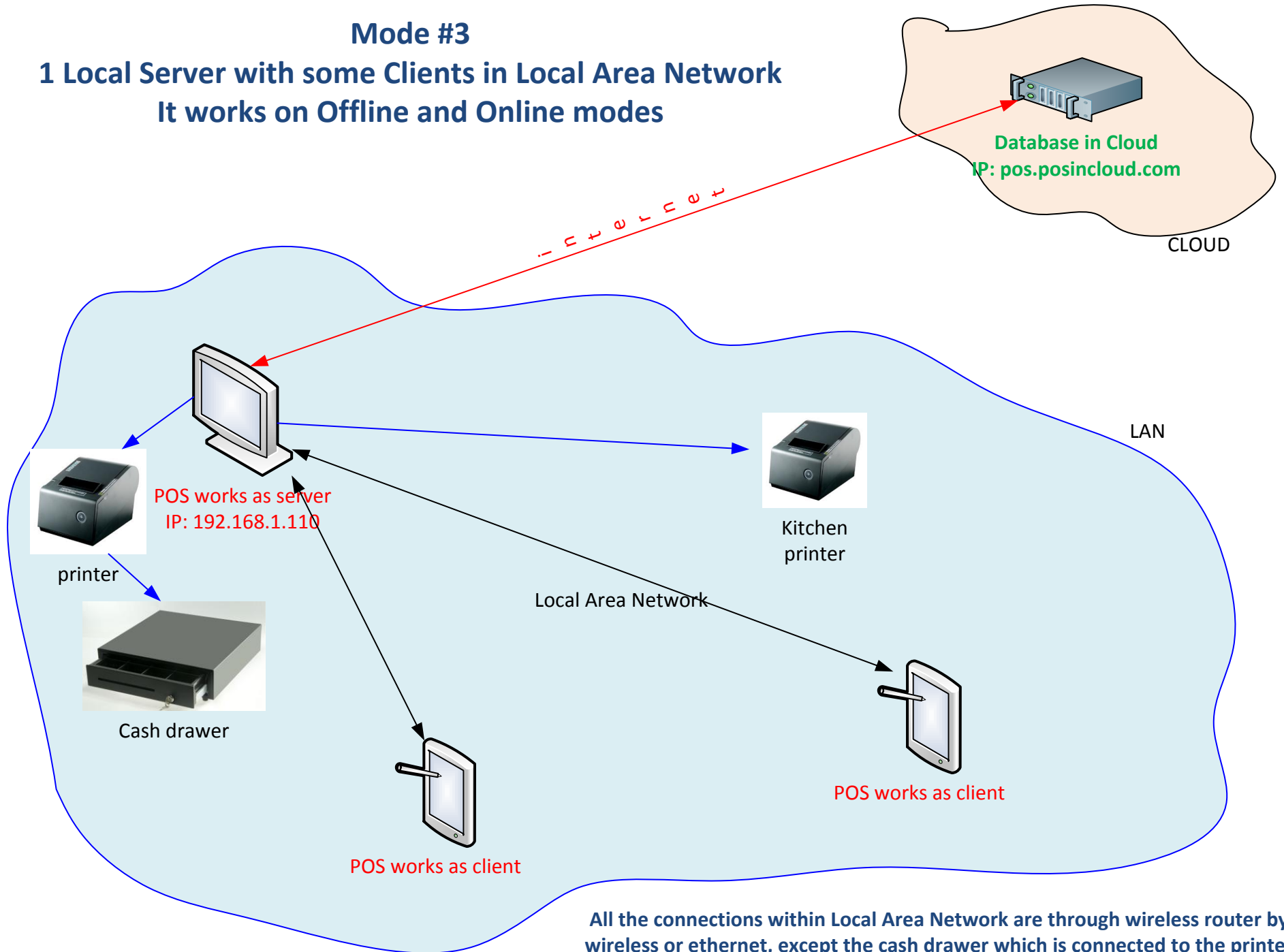


**All the connections within Local Area Network are through wireless router by wireless or ethernet, except the cash drawer which is connected to the printer**  
**Check the last diagram named "LAN setup example" for reference**

### Mode #3

## 1 Local Server with some Clients in Local Area Network

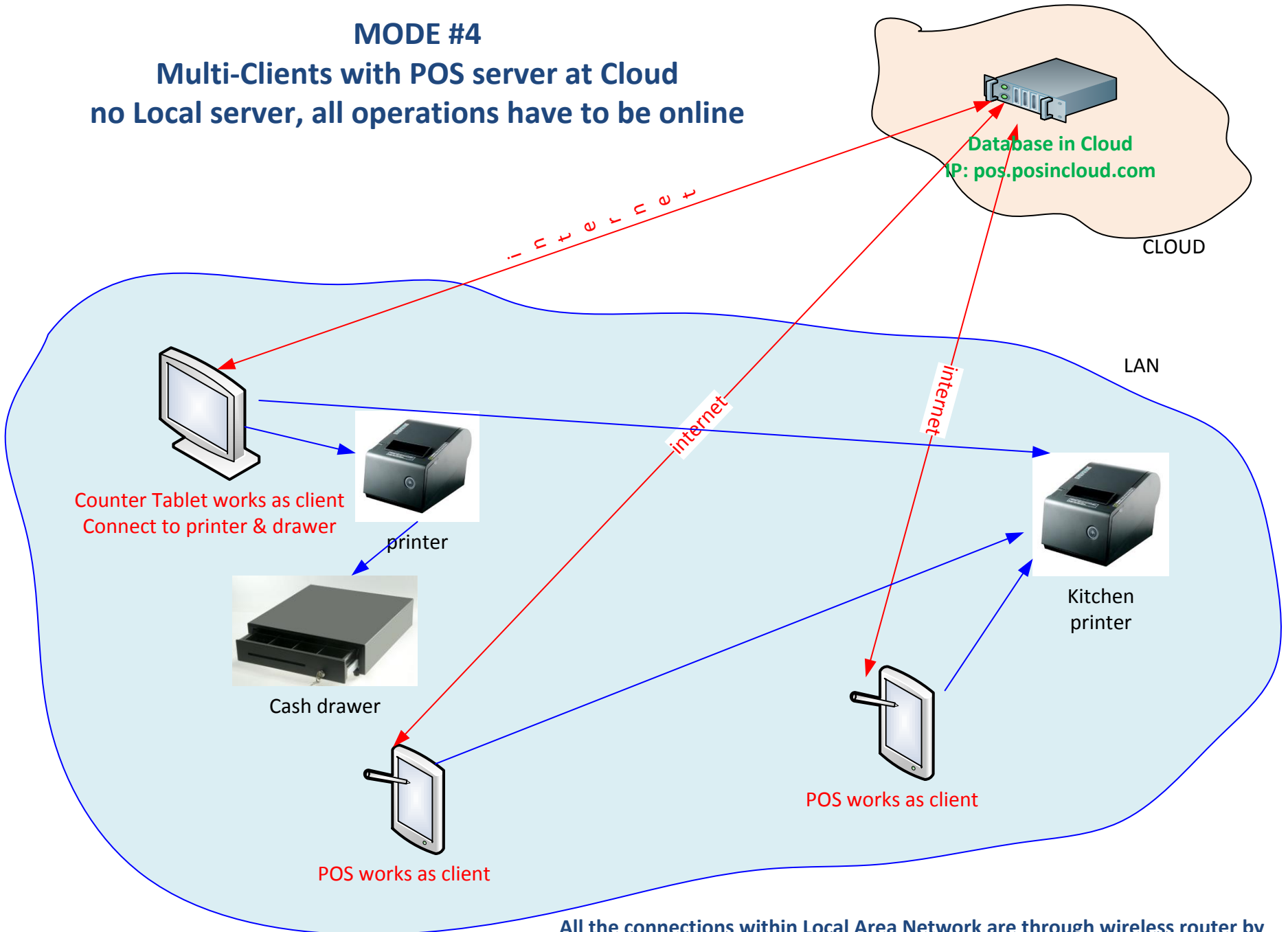
It works on Offline and Online modes



All the connections within Local Area Network are through wireless router by wireless or ethernet, except the cash drawer which is connected to the printer  
Check the last diagram named "LAN setup example" for reference

# MODE #4

Multi-Clients with POS server at Cloud  
no Local server, all operations have to be online

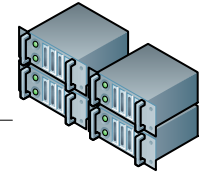


All the connections within Local Area Network are through wireless router by wireless or ethernet, except the cash drawer which is connected to the printer  
Check the last diagram named "LAN setup example" for reference

# POS IN CLOUD Network Setup Example



Portal management at remote location



Cloud servers

internet

internet

\* All IP addresses are for reference only, can be different depends on the network environment.

wireless

ethernet

wireless

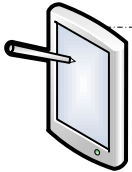
Wireless router

Gateway IP: 192.168.1.1

ethernet

ethernet

Option Client Tablet  
IP: 192.168.1.101



Tablet as POS  
server or client  
IP: 192.168.1.100



Cash drawer

RJ45



Receipt Printer  
IP: 192.168.1.110  
Port: 9100



Customer display  
IP: 192.168.1.123  
Port: 5000



Food scale  
IP: 192.168.1.124  
Port: 5000



Kitchen Printer  
IP: 192.168.1.111  
Port: 9100

RS-232 cable

RS-232 to ethernet bridge

RS-232 cable