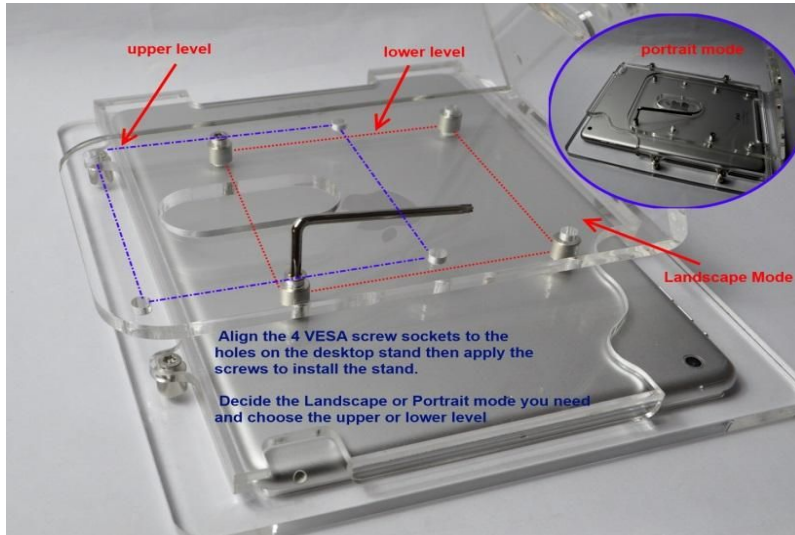


TABcare Security Desktop Stand Installation Guide

1. The Security Desktop Stand comes with one VESA kit, one desktop stand, 13 security screws, one screwdriver, one round swivel base with 3M VHB tape, and one locking cap.

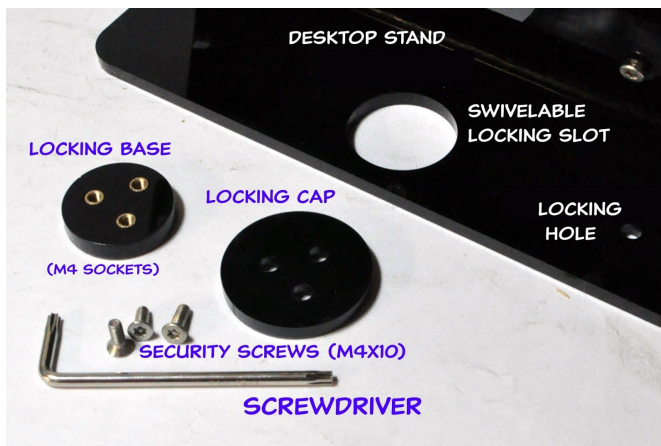


2. Place the front panel of the VESA kit on a smooth surface and properly sit the tablet within the alignment pegs, apply the back pane of the VESA kit on top of the tablet and lock the security screws with bundled screwdriver.

3. Make sure the tablet is placed at the right position where you can access the power, volume, headset jack, and charge port easily.

4. Decide the display mode – portrait or landscape you want to use, align the four VESA holes (100 x 100mm) on the

VESA kit to the equivalent VESA holes on the desktop stand then fix them together by the bundled four M4x10 screws.



5. To secure the stand on a tabletop, first fix the round locking base (with the 3M VHB tape at bottom) on the surface of the tabletop, then align the stand's round locking slot to the base to it, then apply the locking cap on top and secure it by 3 security screws. This setup will allow you to swivel the stand on the table.
6. To fix the stand without swiveling function just apply the bundled double-sided adhesive pad to the bottom of the stand, or use one to two screws to fix it through the locking holes (5mm)
7. For more details information about our products and support you can visit our web site at www.tabcare.com or call us at **718-690-7653**

